

LOOKING FORWARD. GIVING BACK.

SNOHOMISH COUNTY GENEROSITY

"To accomplish great things, we must not only act, but also dream; not only plan, but also believe."

— Anatole France, Poet

LEARN



Sky Valley Indian Education

SUPPORT



Cocoon House

GIVE



Senior Services of Snohomish County

PLAN



Safe Harbor Free Clinic

CONNECT



Everett Public Schools

www.greatereverettcf.org

GREATER EVERETT
COMMUNITY
FOUNDATION

Serving all of Snohomish County

SNOHOMISH COUNTY

Bold Giving. Local Impact.

The Greater Everett Community Foundation is a nonprofit unlike any other in Snohomish County. We are a funder, grant maker, trainer, investor, cheerleader and advocate. We promote charitable giving and strive to create community impact through our grant making. Funding comes from people across the community. We simply connect generous people to nonprofits that need support. Families, individuals, businesses and nonprofits have started more than 100 charitable funds at the Community Foundation in the past 12 years. Donors can create their own fund or join others by contributing any amount to one of the Foundation's five Community Funds.

Grants are made from these 100 funds directly to our community. Together with our donors, we've awarded more than \$7.2 million in grants since 2001. Grants support every imaginable area of our community from homeless shelters and

local arts organizations to tree-planting projects and writing programs in schools.

Once started, funds are invested as endowments to grow. Each year the earnings are used for grant making. Because the funds are pooled, donors get a better rate of return than they could individually. Over time, the funds grow larger even while giving out grants. This formula ensures that funds will remain in the community forever.

"In the last five years, 40% of donors have shifted more of their support for nonprofits working locally to benefit their own communities.

— Cygnus Applied Research, Inc., 2012.

How much you give is up to you. How big it grows is up to us.

HOW DOES AN ENDOWMENT WORK?

If a \$50,000 gift was made on January 1, 1987 to establish an endowment fund at the Greater Everett Community Foundation, the chart below illustrates its impact.

YEAR	FUND VALUE	TOTAL GRANT DISTRIBUTIONS
1987	\$50,000	\$0
1992	\$71,001	\$14,984
1997	\$104,335	\$34,194
2002	\$86,314	\$62,406
2007	\$97,405	\$86,049
2012	\$84,151	\$106,647

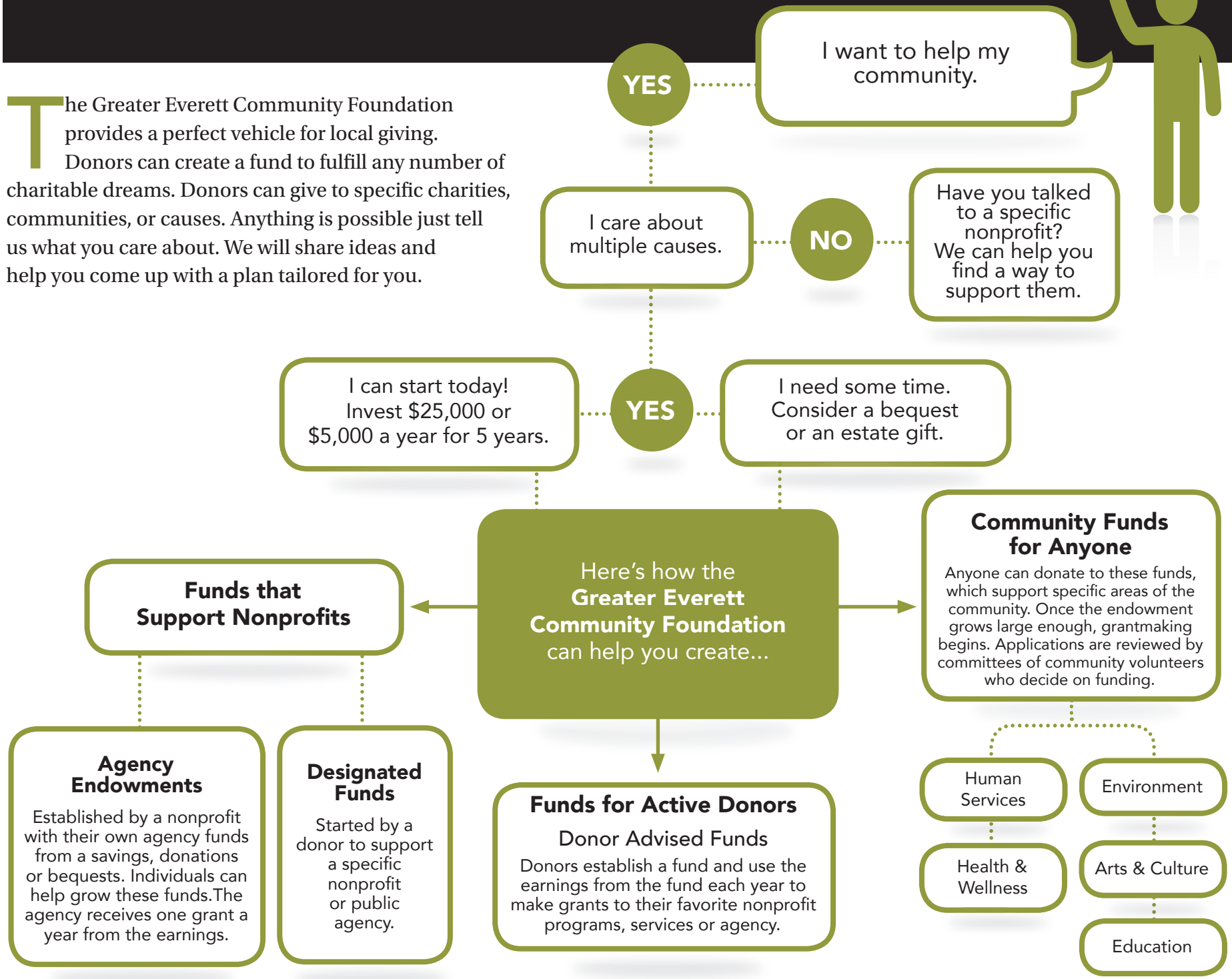
Assumptions: The above fund information was based on actual returns for the years 1987-2012. Investment mix is 60 percent equities and 40 percent fixed income with our fee taken out. The annual distribution is 5 percent of the fund value based on three year rolling average. Ten year average rate of return is 7.5 percent.

SNOHOMISH COUNTY

Your Dreams. Our Mission.



The Greater Everett Community Foundation provides a perfect vehicle for local giving. Donors can create a fund to fulfill any number of charitable dreams. Donors can give to specific charities, communities, or causes. Anything is possible just tell us what you care about. We will share ideas and help you come up with a plan tailored for you.



GENEROSITY IN ACTION

Giving Made Easy.



Every individual and family has unique charitable interests. One size does not fit all. That is why the Community Foundation works closely with professional advisors and their clients. Foundation staff provide a broad range of tools and information about the nonprofit sector.

The Foundation does not promote one charitable cause. Instead, its mission is to support donors in the causes that matter to them. A fund can be established with \$25,000 or with \$5,000 a year for five years. Donations of any size can be added to a Community Fund.

GREATER EVERETT
COMMUNITY
FOUNDATION

Serving all of Snohomish County

The Foundation handles the investments, the IRS reporting, the audit and continuing compliance with changing federal laws. Read how these donors and their professional advisors were able to make meaningful contributions aligned with their values and interests through the Community Foundation.

With a twist of fate...

Ed and Betty M. changed the course of the Greater Everett Community Foundation forever. In the process they never dreamed of what they would get in return. After years of managing a building in downtown Everett, Ed and Betty were thrilled to hear that the Community Foundation was seeking a new office to rent. Ed mentioned that they were growing tired of managing the building. They met with their CPA Rich Anderson and came away with a “win-win” situation in the form of a Charitable Remainder Trust (CRT).

Here’s how it worked:

- Ed and Betty transferred the building into a CRT and received a tax deduction for their gift.
- The Community Foundation bought the building from the trust and the proceeds were invested by the trust.
- Because the building was owned by the CRT, Ed and Betty avoided capital gain taxes on the sale.
- The trust now pays Ed and Betty a fixed, quarterly payment for life.
- The Foundation is the remainder beneficiary of the trust so when Ed and Betty pass away the Foundation will receive the funds in the CRT.

Ed and Betty still get financial benefit without any tenant worries and the Community Foundation now has a beautiful home in downtown Everett.

Beneficiary for life

Randy and Mary G. both purchased life insurance policies when their daughter was born. Now that their daughter has grown and they have little debt, they have decided to change the beneficiary on their life insurance policies to the Greater Everett Community Foundation. It was a simple and easy process. Randy and Mary have a fund agreement on file that would create a donor advised fund with their life insurance proceeds. Their daughter will be the advisor on this fund. She will continue giving charitable gifts in their name from the fund’s invested income.

Turned to the Community Foundation for support

When William and Eleanor B. died in the 1940s they established a private trust to benefit human services needs in Snohomish County. During the past 70 years this trust was managed by a group of volunteers. Private foundations require considerable paperwork on top of the grant making. With the help of Attorney Henry Newton, the volunteers turned to the Community Foundation for support. The trust was converted into a donor advised fund. The Community Foundation is now responsible for all the administrative work and the volunteers meet once a year with the staff to review their grant applications and give away money.

Awarding grants while decreasing their taxes

Tom and Patty L. worked for many years at Everett Community College and are now enjoying their retirement. Because of their age they are required to take annual IRA distributions. These distributions are considered income and therefore affect their taxes. This year Tom and Patty worked with their Financial Advisor Loren Van Loo to give their annual IRA distribution to the Human Services Fund at the Community Foundation. Each year a committee of local volunteers review and decide on grants from this fund. This contribution allows the Foundation to award more grants while also decreasing taxes for Tom and Patty.

Ensuring funds will grow

Gladys R. is 85 years old and has been a loyal donor to numerous nonprofit organizations in the Sky Valley area. She recently received an inheritance. She worked with attorney Melinda Grout to create the Sky Valley Human Services Fund so that local nonprofits would continue to receive support once she is gone. The fund was set up so that anyone can add to it. Grants are made by a group of community volunteers who review applications and decide on the grants. The Foundation’s investments will ensure that the fund will grow. Thanks to Gladys, nonprofits in east county will continue to receive money every year.

COMMUNITY IMPACT

Return on investment requires an investment in community.



Snohomish County Music Project

It is impossible to imagine our community without nonprofit organizations. In so many ways, they enrich our health, well-being, and our future. The Community Foundation considers nonprofits our strongest allies. We believe that an investment in a nonprofit's infrastructure and operations builds strong agencies. When nonprofits are strong and more efficient, they are able to deliver better programs and services to our community. It doesn't take much. If any sector knows how to do a lot with a little, it's the staff and board members at our local nonprofits. Last year, the Community Foundation took bold steps to help local nonprofits become more efficient and effective by providing:

Nonprofit Support & Services

- FREE Workshops for board and staff
- Local networking opportunities
- Referrals to resources and consulting support
- Opportunities for grant funding

Catalyst Program. A nine-month, intensive program for agencies ready to move to the next level of growth. Seven to 10 agencies participate at a time and receive free consulting services.

Workshops. Three times a year, we provide half-day workshops for nonprofit staff and boards. We bring in high-quality presenters on topics in demand. More than 200 people have attended in the past two years. Programs have included: Relationship Fundraising, Board Governance, and Partnerships and Collaboration.

Networking. The Foundation facilitates monthly networking groups for nonprofits in north and east Snohomish County. They provide opportunities for nonprofits to learn and collaborate. We've facilitated 44 programs for more than 500 participants. Ninety-two percent of attendees indicate on evaluations they are able to "immediately use and apply the information."

Resources, Consultation. Foundation staff provides a variety of one-on-one consultation, referral and support.

Grants. The Foundation awards grants during two competitive cycles per year and via donor funds, year round.

Agency Funds. The Community Foundation can manage endowments for local nonprofits. The funds can generate income or can be reinvested to grow over time. The Foundation's 10-year average rate of return is 7.5 percent.



FOR MORE INFORMATION

on our workshops, grants or networking groups, check out our support for nonprofits tab on our website: www.greatareverettcf.org.

SNOHOMISH COUNTY

THANK YOU SPONSORS.

Many families and corporations support our work in the community.

Our 2013 sponsors have made it possible for the foundation to provide nonprofit services and grant making support.

The Herald is proud to be a partner of The Greater Everett Community Foundation and their support of non-profits in Snohomish County. Together we bring you the 2013 Greater Everett Community Foundation Report.

"The Community Foundation strives to better serve all charitable organizations by promoting capacity programs that help teach charities to be good stewards of their own resources by applying practical business strategies."

— Virginia C. Antipolo-Utt,
Attorney.

Allied Waste Services
Boeing Company
Cascade Coffee
Global Spectrum
Phil & Kelly Johnson
KRKO and KXA Radio

KSER Radio
Mosaic Insurance Alliance
Rodland Toyota
The Everett Clinic Foundation
The Herald
Wells Fargo Private Bank

Adams & Duncan Law Firm
Anderson Hunter Law Firm
Best Family
Coastal Community Bank
Hans & Martha Dankers
Dwayne Lane Family of Auto Centers
Everett Community College Foundation
Mike & Maggie Faulkner
Hascal, Sjolholm & Company
George & Ellen Kauffman
J. Robert Leach & Vickie Norris

Jeanne Metzger
Moss Adams LLP
Providence General Foundation
Puget Sound Energy
Puget Sound Kidney Centers
SagePoint Financial
Sea-Dog Corporation
United Way of Snohomish County
Randy Utt & Maddy Metzger- Utt
Gary & Carolyn Weikel
Whidbey Island Bank

Adler & Giersch, PS
Bank of Washington/Moss Adams
Banner Bank
Don & Joan Barbacovi
Campbell Nelson Volkswagen
Centerplate
Bill & Patty DeGroot
Jeff & Bonnie Eckley
Everett Bone & Joint
Everett Firefighters Association
Gamut 360 Holdings
Carlton & Sheila Gipson
H & L Sports/Soccer West
Don & Mary Hale
Harbour Investment Management
Bill & Marilyn Hecht

Law Offices of Melinda K. Grout
Mountain Pacific Bank
Scott & Kippy Murphy
Bill & Karen Neumeister
Tim Nowlis & Kim Chadwick
Peak Performance
Rhino Ventures
Rubatino Refuse Removal
Sarco Precision
Idamae Schack
Senior Services of Snohomish County
Stadium Flowers
Thomas & Associates Insurance Broker, Inc.
Clay & Hap Wertheimer
Work Opportunities



“The Community Foundation has been a top choice for me when clients have long-term and varied charitable intentions. It’s a one-stop shop for me. They help both Snohomish County donors and non-profits achieve maximum impact.”

— Ross Rettenmier,
Investment Advisor

Grant, pictured right, has a fund at the Greater Everett Community Foundation. His grandparents, Marguerite and Jack, started it when he was only 10. Each year, he awards funds to his favorite programs in the Snohomish School District.

FAST FACTS

- Although Everett is in our name, **we serve all of Snohomish County.**
- Thanks to our eight Founding Families and their early vision for Snohomish County, **we hold the largest operating endowment** of any other Community Foundation our size in the country.
- When we began our assets totaled **\$275,000**. Today they are **\$13 million**.
- Donors have received an average return of **7.5 percent** for their funds over the past **10 years**.
- Since our inception, we have awarded more than **\$7.2 million** in grants to charitable organizations in Snohomish County.
- Last year, we distributed **226 grants** totaling **\$730,706**.

MAILING ADDRESS:

P.O. Box 5549,
Everett, WA 98206

PHYSICAL ADDRESS:

2823 Rockefeller Avenue,
Everett, WA 98201

PHONE: (425) 212-4056

STAFF:

Maddy Metzger-Utt,
President & CEO

Karri Matau,
VP of Grantmaking & Partnerships

Elena Pullen-Venema,
VP of Development

Julie Frauenholtz,
Director of Donor Services

**GREATER EVERETT
COMMUNITY
FOUNDATION**

Serving all of Snohomish County

www.grethereverettcf.org